

ART TECHNIQUE

Painting

AGE GROUP

Appropriate for students 6–14 years of age

CONCEPT

Students create a figurative painting inspired by the works of Gustav Klimt that includes symbols of personal meaning.

SESSIONS

2 x 90 minute sessions

MATERIALS

- Chromacryl Students' Acrylic in the following colors: White, Black, Warm Red, Warm Yellow, Warm Blue, Burnt Sienna, Burnt Umber, Raw Sienna, Yellow Oxide, Red Oxide
- Chroma Molten Metals Metallic Acrylic in the following colors: Xanadu Gold, Rojo Gold, Dorado Gold, Regale Blue, Plum Purple, Ruby Red, Emerald Green
- Chroma Glitter Paint in the following colors: White, Black, Blue, Red, Green, Violet, Gold
- 1 x 11" x 14" black canvas or black paper
- 1 x #6 & 1 #4 hog hair paint brush per student
- 2 boxes of pencils per class
- 1 x rag per student for cleaning
- 2 x water containers for each group of 4 to 6 desks
- 2 x ice cube trays containing a range of different colored paint for each group of 4 to 6 desks. Any other small plastic containers with lids are also suitable.
- 1 x roll of plastic cling wrap to cover the paint trays at the end of each session
- 1 x newspaper to cover desks
- 1 x roll of masking tape to secure the newspaper to the desktop per class
- 1 to 2 sheets of scrap paper per student to mix their colors (easily disposable at the end of the session)
- 1 x plastic bucket with soapy water
- 1 x non-abrasive scouring pad to clean the paintbrushes
- 1 x paint shirt or art smock per student



Gustav Klimt (1862-1918) was an Austrian painter. He was one of the founders of the Vienna Secession movement and is one of the most famous Art Nouveau painters. Art Nouveau celebrated decorative aspects of art as opposed to the purely representational, and frequently used curves, natural forms and other symbols for patterns in paintings.

Klimt is most well known for his paintings of woman and his use of gold leaf. One of his paintings, *Adele Bloch-Bauer I*, is particularly striking in its use of decorative gold pattern. It is hard to tell the difference between the sitter and the background.

We can also learn about Klimt's artistic process by studying one of his unfinished works, *Ria Munk III*. In this large painting, we can see that although Klimt has moved away from his use of gold, he still uses pattern and his models have rosy cheeks. We can see that he tests color and composition of decorative elements, too.

OBJECTIVE

This project provides students with the opportunity to reflect on and discuss the Art Nouveau movement as well as learn about the artistic process by studying Klimt's "unfinished" work, *Ria Munk III*. Using Klimt's portraits as inspiration, students will create a portrait or self-portrait that uses personal symbols for patterns while using metallic and glitter paint to replicate Klimt's "Gold Period" paintings.

NATIONAL CORE ART STANDARDS

Creating

Anchor Standard 2: Organize and develop artistic ideas and work.

Presenting

Anchor Standard 4: Select, analyze, and interpret artistic work for presentation.

Responding

Anchor Standard 7: Perceive and analyze artistic work.

VISUAL REFERENCES

Adele Bloch-Bauer I, *Ria Munk III*, *Mada Primavesi*, *Baby*, *The Kiss* and other age appropriate works by Gustav Klimt and other Art Nouveau artists (i.e. Henri de Toulouse-Lautrec, Hector Guimard, Louis Comfort Tiffany, Antoni Gaudi and Aubrey Beardsley).

ROOM SET-UP AND PREPARATION

Arrange the desks in groups of 4 or 6 and cover them with sheets of newspaper secured with masking tape so the students can work in groups and reach for the art materials easily. (1)

Prepare all the art materials in advance—dispense paint, canvas, paint brushes, pencils and the rest of the equipment needed for this painting experience. (2)

FIRST SESSION

Present works from Art Nouveau artists. Initiate a group dialogue on similar elements in this movement based on what they observe (curves, patterns and natural elements.) Discuss what is different (each artist had their own unique approach in using curves, patterns and natural elements.) Present and discuss Klimt's *Adele Bloch-Bauer I* and other Gold Period works and the use of pattern as a decorative element. Present and discuss *Ria Monk III*, and how Klimt uses color instead of gold, but still uses pattern. Have the students observe what is similar in Klimt's paintings (women, rosy cheeks, use of curves and patterns).

Decide if students will paint a self-portrait or a portrait of another student.

Drawing:

The students use pencil to create a preliminary study of their portrait. Use curves and basic folds for the outfit. Use personal symbols for the background decorative patterns. It does not need to be detailed but there should be 4-8 symbols for patterns and should fill the space. This study will be the basis of the painting.

Using the study as a guide, use pencil to create the drawing on the black canvas. (3)

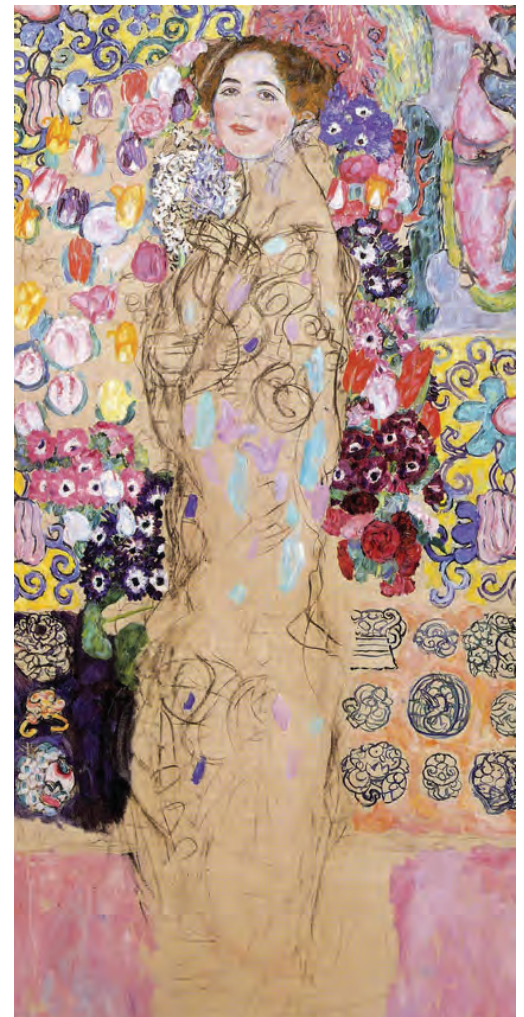
SECOND SESSION

Painting:

Once the drawing is done, students will start applying paint. First they will paint the big areas with the medium sized paint brushes. At this stage students will start to make decisions



Adele Bloch-Bauer I, 1907



Ria Munk III (unfinished), 1918

about skin color and will have the opportunity to mix as many colors as they like using Chromacryl. While the face painting is still wet, add a bit of Warm Red on both sides of the face for a Klimt “rosy cheek.” For students with dark hair, mix Chromacryl Impasto Gel Medium so the color will pop from the black canvas.

Use Molten Metals Regale Blue, Plum Purple, Ruby Red and Emerald Green for the background patterns. Use Molten Metals Xanadu Gold, Rojo Gold and Dorado Gold for the pattern on the outfits. (4)

Students can start filling in the detail with their small paint brush as the paint dries, adding patterns as they go—like repetition of short lines (crosshatching), dots and many other strokes that they can use to fill the selected areas. (5)

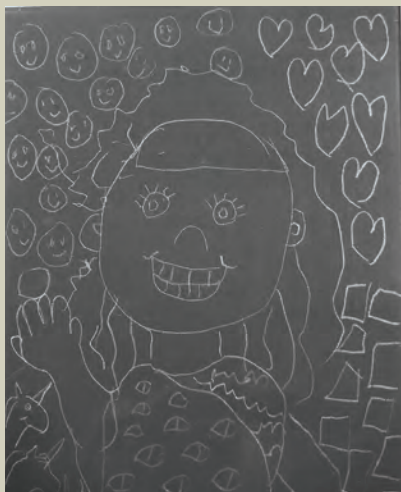
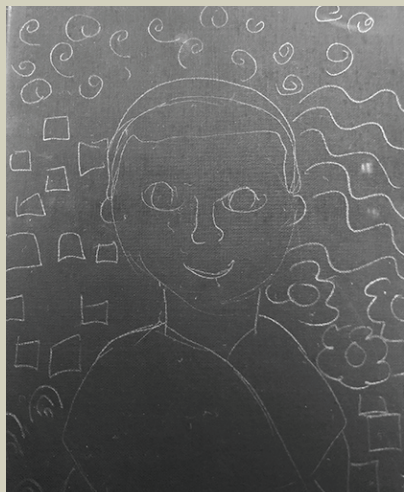
When the painting is completely dry, paint over selected areas with Glitter Paint Gold, White, Violet, Blue, Red, Green and/or Black to add extra sparkle to the outfits and backgrounds. (6)



1. Table set up



2. Paint set up



3. Students drawings on the black canvas



4. Apply the skin tones with Chromacryl and background pattern with Molten Metals.



5. Filling in the details with Molten Metals.



6. Use Chroma Glitter Paint for extra sparkle

